



Pura Vida Missions Expansion
January, 2025

Prepared by Lineaea Floden, AIA,
ACHA, NCARB, LEED AP BD+C



PURA VIDA MISSION EXPANSION PROJECT
DESIGN NARRATIVE

© 2025 ORIGIN | Architecture and Interior Design
All rights reserved.

This document presents not for construction design concepts intended for a one time solution to a specifically defined project and site. No part of this publication may be reproduced, distributed or transmitted in any form out of context to this specific project.

www.architecturebyorigin.com

contact@architecturebyorigin.com



CONTEXT (adapted from <https://puravidamissions.com/about/>)

In the heart of San Juan, San Ramón, nestled 300 meters east and 25 meters north of the bustling sports plaza, lies Pura Vida Missions, a beacon of hope and transformation. This serene location in Alajuela serves as the base for an organization deeply committed to altering lives through the lens of faith and service.

Pura Vida Missions operates with a clear vision, encapsulated in their mission statement: to transform lives through Christ-centered, life-changing mission adventures. Here, following Jesus is not seen as a one-time event but as a continuous journey, a lifestyle that permeates every aspect of one's existence. Those curious or inspired by this mission can delve deeper into their story through the organization's website, where tales of transformation and faith are shared.

The core of Pura Vida Missions is built upon a set of values that guide their every action. 'Pura Vida,' a phrase emblematic of Costa Rican culture, represents the pure life, an attitude of positivity and simplicity which they strive to embody. Their work is multigenerational, bringing together people of all ages in a shared mission, fostering a community where wisdom and youthful energy blend to create something truly special. Servant Leadership is at their heart; leaders here are not rulers but servants, echoing the teachings of humility and service. Their focus on Mission and Discipleship ensures that every adventure is not just an activity but a step towards deeper faith and understanding, while their Kingdom Focus reminds all involved that their work is part of a larger divine purpose.

This mission is profoundly inspired by a scriptural verse from Mark 10:45--"For even the Son of Man did not come to be served, but to serve." This verse is the cornerstone of their ethos, reminding everyone at Pura Vida Missions that their purpose is to serve others, mirroring the life of Jesus. It's not about receiving but giving, not about being served but serving with love and dedication.

At Pura Vida Missions, hope is shared with the community of Alajuela, as volunteers and missionaries engage in outreach, driven by these values and this mission. They set out into the community, engaging in projects that range from building homes to teaching children, always with the aim of planting seeds of faith, hope, and love. Their work is a testament to the belief that transformation is possible, one life at a time, through the power of community, service, and the guidance of their faith.

In 2024 Pura Vida Leadership set out to acquire a parcel of land adjacent to the campus to expand the campus' capabilities and functions, enabling easier operations and relieving tensions from the restricted free and functional spaces of the current campus. The acquisition of the parcel positions the Mission for a focused building and open space expansion intended to primarily resolve 3 main pain points: Create separate, open spaces for both construction and missionary activities, lodging for the Director, and campus access and parking.

Leadership

Dan Burns – Co-Founder, Director, David Roberts – Director, Ted Roorda - Director

Albert Rossodivita is Co-Founder and Executive Director of Pura Vida Missions and has been serving continuously since its founding in 2004. He permanent residency is in Florida, USA but he spends up to half of his year at the Pura Vida Missions campus in San Ramon, Costa Rica. As Executive Director, Albert oversees and leads implementation of all Mission activities and organization functions.

Marjorie Mora joined the Pura Vida Missions organization in 2014 and serves as a Sponsorship Program Administrator

Ronald Muñoz joined the Pura Vida Missions team in 2012 as a Sponsorship Program Administrator, Project Coordinator, and Educator. In this role he is responsible for coordinating and facilitating the Mission's teams to the various construction sites and fabrication activities.

Both Albert and Ronald participated in thought leadership for the Campus Expansion Design.



ALBERT ROSSODIVITA
Co-Founder, Director



MARJORIE MORA
Sponsorship Program Administrator



RONAD MUNOZ
Ronald Muñoz

Content

EXISTING CONDITIONS AND OPPORTUNITIES

THE MISSION HOUSE
12

MISSIONARY APARTMENTS
12

THE SALON
12

CAMPUS LIFE
12

FUTURE EXPANSION PARCEL
12

DESIGN NARRATIVE

PROGRAM AND CRITERIA
16

ITINERARY
18

BEAUTY
18

DESIGN FACTORS
18

MATERIALS
20

DESIGN SOLUTION

SITE ANALYSIS
24

PROPOSED SITE PLAN
26

SITE SECTIONS
28

WORKSHOP AND LOFT
ELEVATIONS
30

WORKSHOP AND LOFT FLOOR
PLANS
32

EXISTING CONDITIONS



*“Costa Rica is the greenest place on earth, with its rainforests, its cloud forests, its jungles, and its incredible biodiversity.
—Sir David Attenborough*

EXISTING CONDITIONS AND OPPORTUNITIES

The current campus is composed of 3 main buildings: The Mission House, Missionary Apartments and the Salon. The entire campus is encompassed with a concrete perimeter wall and single (gated) entry.

The Mission House is currently the front door for the facility, though the entry sequence presently requires that guests bypass the Mission house into a common parking area, or to stop adjacent to the Mission House and enter through the side door, directly into the kitchen space. In addition to the commercial-ish kitchen space that serves the campus, the Mission House holds offices, meeting, and conference spaces, a computer lab, and 3 sleeping rooms with adjacent toilet amenities

Connected via cascading roof coverings, separate by corridor of building materials storage at the back of the Mission House, is the *Missionary Apartments*, a two-story shallow but long building immediately against the property line, facing South towards the interior of the campus. It provides multiple rooms of bunkbeds, collectively accommodating up to 50 missionaries. The Apartments also hold toiletry space to serve the missionaries, as well as 3 storage rooms: one for crafts, one for tools and construction equipment, and one for housekeeping items that doubles as a dish station for after mealtime group dishwashing activities.

The Salon boxes in the property. It spans the entire width of the property North to South at the back of the Apartments and stops just about 3 meters short of the back property line. The Salon is a single multipurpose space that houses all worship activities, group meals, and general lounge space. Included in this space is makeshift areas for retail (roughly 1 M²) and “B-Mail” (estimated at roughly 2 linear Meters).

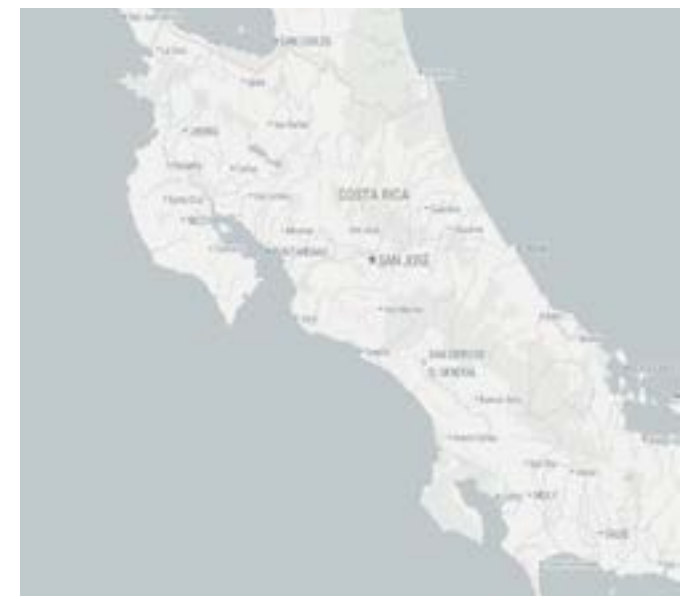
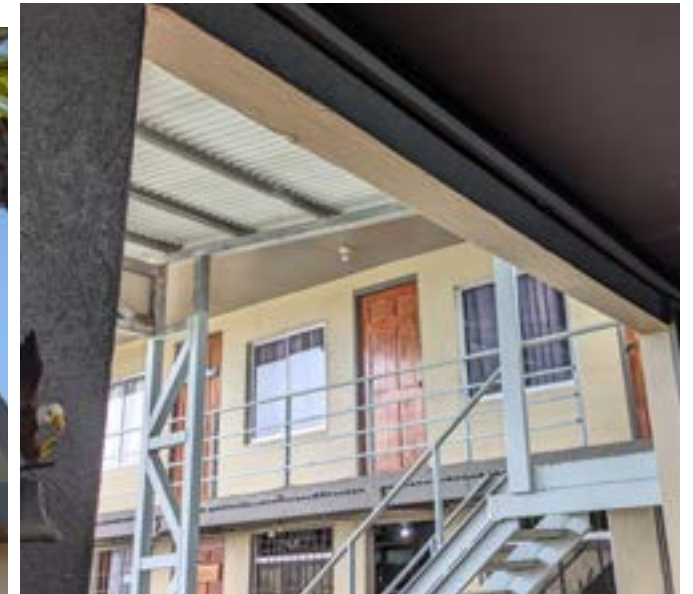
Campus activities usually involve missionaries rotating in shifts at the shower rooms, meeting in the Salon for group meals, dispersing around the campus to various nooks for TAG (Time Alone with God), and congregating in the courtyard for loading on to vans or buses. Occasionally the teams will go on walks in the neighborhood directly from the campus, but these are usually smaller group activities. The Pura Vida Mission,

as part of their construction Ministry, fabricates building components on site for transport and use out in the community. Steel Framework, wood carpentry, and misc building constructs are presently assembled on campus, loaded onto transport vehicles and dispersed out to various project sites for final assembly.

Finally, the system of the campus operations is a constant energy flow through the campus. The Director and Staff arrive at dawn - mostly by foot, scooter or by drop-off from nearby properties, to beginning breakfast prep and setting up the Salon for the first activities of the day. Food is Prepped. And then the inevitable disassembly and cleaning of the dining area to return the Salone to vacant space prior to the next round of activities. Later in the evening additional staff or vendors arrive to support worship service, adding to the courtyard congestion with vehicle and pedestrian traffic, before the campus starts to settle down to end of day routines. Contractors are noted to be on campus on average 3 days during the week to facilitate fabrication of the building components.

Future Expansion

The Mission is in the process, at time of this writing, of procuring a parcel of property immediately behind the campus, spanning perpendicular out to Calle Carballo. The Parcel affords a generous expansion opportunity for the campus, enabling the Mission to create dedicated spaces, separating the Salon activities from those otherwise considered to be Construction activities. The new space would enhance the safety of the Missions functions and also afford the opportunity to create an additional housing space for the Director, resolving various inefficiencies, both operationally and fiscally, inherent to the renting out of an apartment of campus.



DESIGN NARRATIVE



“Costa Rica is a country where the future looks bright not just because of the sun, but because of the heart and passion of its people for peace, nature, and innovation.”
—Oscar Arias Sanchez

DESIGN NARRATIVE

The Pura Vida Mission Expansion project will provide new Workshop Building at the first [do we say Ground or First level in Costa Rica?] Level, an upstairs Directors Apartment, and Outdoor Greenspace and Parking.



Program and Criteria

The Program for the Workshop Shop space shall be to provide assembly and fabrication space, house equipment and tools for in-situ operation, and hold storage for equipment.

- Estimated to be 11.5 x 9 Meters
- Interior Storage space for a minimum of 22 linear Meters of rack Storage, estimated minimum .6 Meters deep and minimum 2 Meters tall, metal racks
- Power accommodations for both multiple tool usage and also multiple battery charging stations to support 5 Battery packs.
- Indoor or Outdoor storage for a generator, Cement Mixer (bonus), 4 Step Ladders and 2 extension Ladders, 6 Wheelbarrows (estimated XX SQ M)
- Minimum XxX Pegboard Rack for tool storage
- Workbench Space of estimated xx SQ M for Contractor fabrication space
- Assembly space for building components
- Garage sized door opening (assumed to be similar to Salon Door), to allow for easy vehicle approach and facilitation of loading. A second smaller door may be considered for easy of access/entry.
- At least one utility sink will be provided for cleanup.
- A large Canopy will be offered to shade the loading activities and protection from the elements
- The Space shall accommodate natural ventilation prioritizing the easterly prevailing winds
- The Building shall be offset a minimum of 1 Meter at all sides from adjacent structures to allow circulation for maintenance.

The Program for the Apartment will prioritize accommodation for a single user capable of both long or short term stay. Its assumed that at least 1 other guest should be accommodated for overnight stay and 4-5 guests maximum for temporary gatherings. A single split unit could be considered for limited, as needed use. Solar heating shall be utilized for Hot Water. Natural gas will be used for the stove.

- Living space with work area, sofa and at least one other seating option
 - o An efficiency sized desk space and task chair positioned at a window for views
 - o Access to the balcony space
 - o Views to the South, overlooking the future Greenspace

o Balcony - the balcony shall be positioned on the South side of the building and provide views to the new campus extension, Greenspace and gardens. It shall be sized to accommodate seating and outdoor barbequing accommodating a maximum 4 people

o Ample windows for daylighting and capturing natural ventilation and framed views to the surrounding community.

- Kitchenette with ample surface area for meal prep and eating
 - o Gas stovetop (2 burner min)
 - o Microwave
 - o Efficiency Fridge
 - o Sink
 - o Open shelving for storage
 - o A pantry for storage of cleaning items and non-perishable food storage
- Bathroom
 - o Direct ventilation to prevailing winds if possible
 - o Towel rack storage
 - o Niche storage for Toiletries
 - o Full size shower
 - o 1M vanity minimum.
 - o Commode
- Sleeping space shall provide minimum closet space and accommodation for at least a queen size bed. It shall have direct ventilation of the prevailing winds and views to the South.

The balance of the campus extension, beyond the parking spaces and South of the Workshop affords opportunity for Greenspace and outdoor activities. The desire is to capture as much surface for grass and greenery as possible

• A firepit area should be designated, roughly 4x4 Meters, accommodating groups of all sizes with simple, moveable bench seating surrounding this area. It should be buffered from street noise as much as possible and should have some privacy from public lines of site outside the perimeter wall.

• A Garden area shall be provided with various program uses. This can include vegetable garden space (on either raised or ground based beds), prayer garden, flower garden or other generic, dedicated and sponsorship spaces.

• In lieu of concrete paving, permeable pavers shall be used for all transport areas. Solid concrete will be provided for framing support and walking paths only

Itinerary

The Campus Extension offers more circulation space and is therefore more conducive for campus entry sequences, positioning this South Entry to operate as the new front of house for the Missionaries. A perimeter wall complimentary in design to the West wall, will enclose the South side of the property. A moveable gate, ideally 1-2 M larger than the existing West gate, will be offer security and branding for the campus. At least 2 security cameras will monitor the space. Upon entry through the South gate, missionaries will be dropped off at the new Salon entrance while luggage is unloaded from the vans. From there, missionaries will proceed through the South end of the Salon space to the West Courtyard and disperse to their quarters before returning to congregate, assumingly, in the Salon.

At anytime it assumed other Mission guests will use this same entry sequence and utilize the open parking at this entrance before proceeding to either the Workshop or the through the Salon to the West Courtyard and on to the Mission House.

Its assumed this same itinerary will work in reverse for missionaries departing from the campus, congregating outside the new Salon entry portal, loading and departing in the vehicles.

Beauty

The modern aesthetic of the Mission House should be considered in the design of the Workshop and Directors Apartment. Clean, unfussy lines articulated in plaster finish, and metal panel roofing will provide both a complimentary aesthetic to the campus and neighborhood, as well as provide optimal long term material performance and low maintenance that would be demanded of the space. Gestures at tile roofing shapes will be restrained and used only to establish contextual uniformity. The expansion space will strive to clearly protect “public” from “private” interactions.

Given the “first experience” of the Mission from this new entry point, care should be taken in crafting the initial views and physical interactions Missionaries have with the campus upon arrival. The Entry sequence should prioritize views to the Greenspace and Gardens, while minimize the paved parking experience and offering Branded Signage and wayfinding to inform and affirm guests of their arrival and safely direct them to their destinations.

Design Factors

Nature

Elevation and Topography:

San Ramón sits at an elevation of approximately 1,057 meters above sea level. This elevation naturally moderates temperature, providing a cooler, more temperate climate than the surrounding lowlands. The topography here, with its gentle slopes and valleys, influences air flow, creating natural ventilation corridors that architects can leverage for

passive cooling strategies in building design.

Temperature and Humidity:

Average temperatures oscillate between a comfortable 13°C and 27°C, necessitating designs that can adapt to both cooler mornings and warmer afternoons. The humidity, particularly during the wet season (May to November), must be accounted for in material selection to resist mold and promote natural evaporation of moisture. Architectural solutions might include overhangs for shading, cross ventilation for air movement, and the use of moisture-resistant materials like teak or treated bamboo.

Solar Exposure:

San Ramon receives approximately 12 hours of daylight on average, varying by only 30 minutes between Winter and Summer months. With the sun rising at approximately 5:30 AM and setting at 6:00 PM, buildings must be oriented to optimize solar gain in the cooler months and minimize it during the warmer periods. East-west orientations can help with morning and evening sun control, while strategic placement of windows and sunshades can regulate internal temperatures, akin to how skylights and clerestories are used to balance light and heat.

Rainfall and Wind Patterns:

San Ramon’s notably high annual rainfall averages around 3,000 mm, (700 mm more than the surrounding region) distributed unevenly across the year. Architectural responses include pitched roofs for efficient water shedding and adequate capture and release components such as gutters and underground piping as well as bioswales for treatment before entering public waterways or sanitary systems . Prevailing winds are from the Northeast roughly 90% of the time with winds from the Southwest, typically occurring mid day 10-12% of the time. Channeled through local geographical features, offer natural cooling and must be considered in the placement of windows, doors, and outdoor living spaces.

Vegetation and Landscaping:

The lush, dense vegetation of this area not only defines its microclimate by providing shade and reducing heat islands but also suggests a biophilic design approach. Buildings design should incorporate natural elements and views to nature with extensive landscaping that not only cools the environment but also integrates the structure into its natural context, emphasizing sustainability.

Sustainability and Materiality:

Given the climate, sustainable architecture here would focus on materials that require minimal maintenance against moisture and heat, as well as reflect local availability for reduce product transport. Use of local materials like clay tiles for roofs, bamboo for decorative and structural elements, and stone for foundations would be both practical and culturally resonant, minimizing the carbon footprint and enhancing the building’s integration with its environment.



View looking North. Site Photos Courtesy ORIGIN Architecture, 2025



View looking Southwest. Site Photos Courtesy ORIGIN Architecture, 2025

Political

The Pura Vida Campus must be resilient to the local codes and ordinances, or lack thereof, that frame the experience of residences. The environmental regulations in Costa Rica are strict due to the country's commitment to environmental conservation. The National Technical Secretariat of the Environment Ministry (SETENA) plays a crucial role in approving or denying construction projects based on environmental impact assessments. Regardless of strict building regulations, the local ordinances are a mix bag of restriction and allowances, allowing for large vehicle traffic and subsequent noise to canvas the small, poorly maintained roads, sans shoulders and pedestrian walkways, and without a sensitivity to the developing community around the area, showing a healthy mix of larger retail spots and small single service shops. Simultaneously, the Campus activities are regulated by community ordinances, restricting particularly the Salon via 30 Meter setbacks from the front (West) and 10 Meter setbacks at the rear (East) for sound. The new Campus extension has a 7 Meter setback to the South, between the property line and the center of the right of way. Sensitivity should be given to neighbors; the Mission should serve to enhance the value of the property to the residence, while amplifying the mission of serving others first, and therefore show sensitivity to the needs of the neighbors by projecting peace and tranquility.

Site and Building Systems

- Drainage – self designed to run off the property. Bioswales are provided at the street. Roof Drainage is piped below grade, daylighting at the street.

- Septic – for sewage
- Natural Gas – tank for the apartment, tank apartment
- Solar Heating – For Hot Water Only
- Turf
- Grading
- Separate metering – its assumed that the two parcels will have separate metering.

Circulation and Connection

Given the itinerary of Campus guests and Missionaries, care should be taken in addressing circulation paths. Missionary circulation from the drop off point at the Salon to the Greenspace and Garden space shall be protected from typical vehicle circulation. Similarly, Staff foot-traffic passing from parked vehicles should be afforded a path to the buildings that is safe and doesn't require overlap with moving vehicles.

Materials

The Materials for the project are proposed to be as follows:

Workshop:

- Metal frame with Durarock cladding and cementitious plaster finish for building
- Metal canopy framing and metal panel roofing systems utilized for both canopy and Building structure.
- Concrete paving with textured epoxy finish for

Workshop Space

- Custom fabricated metal storage shelving
- Custom fabricated metal frame workbench with wood work surface
- Metal rack storage from ceiling for building mater

Apartment:

- Tile flooring throughout
- double pane double hung windows (with sensitive to sound transmission mitigation for windows
- Solid Surface countertops in Kitchen and Bath
- Tile surround with Glass partition at Shower.
- Open shelving storage, preferably wood for visual aesthetic haptic warmth.

Greenspaces:

- Wood accents and greening wherever possible. Plastics or Metals with “wood look” finishes are an acceptable compromise that afford cleanability and best material performance.
- Furniture shall be moveable
- Wherever possible, grass/turf will be utilized for common areas, to “soften” the space.



DESIGN SOLUTION



“Costa Rica is a country where the future looks bright not just because of the sun, but because of the heart and passion of its people for peace, nature, and innovation.”
—Oscar Arias Sanchez

Site Analysis

The best design solution responds to the existing and ever present forces on the site and on the program program. The following Analysis highlights these ever present though sometimes unseen forces.

Site Forces

A. **Approach** to the site from the South Entrance must provide accommodation for large truck entry (deliveries, construction vehicles). An approximate 1 Meter grade change between the right of way and the gated property should be graded to yield a level entry at the gate, with a 1% slope for drainage only at the rest of the drive. A 7 Meter setback from the crown of the right of way to the proposed privacy wall and entry gate is required by local code. **Parking** should be located close to the entry gate to protect pedestrian traffic deeper within the site.

B. After parking the largest portion of the site should be reserved for outdoor **Gathering Spaces**, that can accommodate a firepit area, benches and seating. The widest portion of the site, should be reserved for these activities, as well as afford the most appropriate buffer to neighboring properties.

C. Adjacent to the gathering spaces shall be a **Garden Area** reserved for any variety of gardening activities, such as a prayer garden, vegetable garden or memory garden. This area should be reserved for the quietest and most private portion of the site. Proximity to the adjacent Salon Building, distance from the activity of the Workshop, and neighboring perimeter wall will support the effort for seclusion for this area.

D. **Entry from the Salon** offers 2 opportunities for improvement of the overall Campus flow. The Site will be visible from within the Salon and therefore care should be taken as to what view this entry frames and should contrast the paved hardscape at the Salon's West Entry. Secondly, the position of the entry adjacent to the Workshop creates a natural landing spot for Missionaries upon first entry to the campus. This East Salon entry should then provide area for large group gathering for collecting luggage and group instruction.

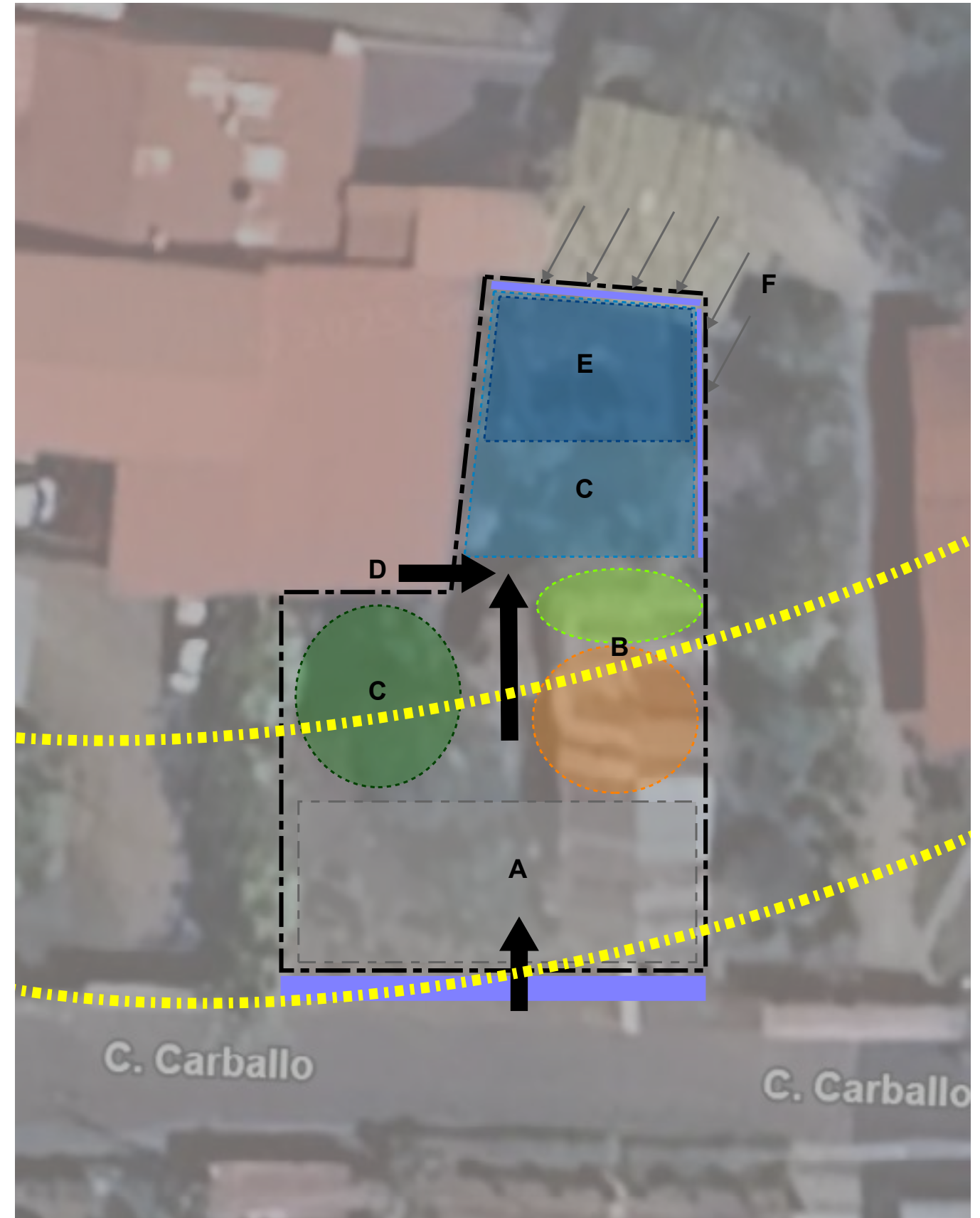
E. **The Warehouse** should be positioned in an area of the site that allows for maximum ease for loading fabricated items onto transport trucks, as well as be located appropriately for serving the living space above. The building should be held off the surrounding perimeter wall a minimum of 1 Meter to allow service access for maintenance. The building should be self supporting and remain clear of drainage from adjacent rooflines.

F. The upstairs **Living Space** shall be situated above the workshop and will prioritize views and privacy. Vertical

access to the apartment should be fully concealed from the public view and moderately concealed from the campus activities. The Apartment should receive prevailing winds for natural ventilation. Though situated adjacent to the outdoor gathering spaces, sitelines directly into the apartment and apartments outdoor living spaces will be restricted from ground level activity.

G. Prevailing winds from the NorthEast occur 80% of the time, complimented by winds from the SouthWest 20% of the time. The SunPath will provide maximum daylighting from the South and Southeast in all seasons

H. The new **South Entrance** should be protected by a solid wall, minimum 3 Meters high and provide a large entry gate. The gate should be a minimum 5 meters wide to provide large vehicle access but be designed in such a way to provide privacy into the space from the public right of way. Site security will be provided at this entrance.



Proposed Site Plan

The composition of the site is a direct response to the needs of mission, providing clear access and parking, but equally as important, privacy, gathering spaces and a sense of place and identity for the campus as hold.

Site Composition

A. **Entry** to the campus is provide through a security gate approximately 5 meters wide (a 2x improvement on the existing gate side at the west entrance). The Gate will provide mitigated views into the campus spaces to provide limited visual connection to the outside, while protecting privacy within. The gate should reflect the same construction and visual expression as the West Entrance, with the addition of mission Branding to express identity to the community. Care will be taken for grading the approach to the gate, to provide limited sloping to the public right of way, while mitigating the roughly 1 meter grade change from right of way to property pad. permeable pavers will provide a solid surface drive and much needed runoff management as well as allow for resilience of the drive, while keeping the overall campus area softer with biophelia. (6) parking spaces are provided just within the entrance for immediate vehical access, to prevent significant cross over traffic between pedestrians occupying the space and vehicular transport.

B. The balance of the front of house space is given over to green spaces. The larges of which is the **Gathering Space**, whihc provides a 2 meter diameter fire pit with movable bench seating for a minium of 16 people. Additional bench seating should be provided and stored in the Workshop. The surface area should be fully landscaped to provide shade, privacy and a sense of enclosure around the fire pit. Picnic bench tables and seating is provided to accommodate a minimum of 16 people (2 tables). Care should be taken in the grading of the site to allow for a level surface under the tables, and the tables are positioned to be covered by the workshop entry canopy.

C. Adjacent to the Gathering spaces is the **Garden Area**. The space accommodates 2-3 nodes for varying garden themes, such as a quiet/prayer garden, a rasied bed garden for 2-3 raised gardening beds, or a another garden for respite and biophaelic engagement, such as a flower or butterfly garden. Landscaping for the garden will accommodate uninterrupted walking spaces for servicing the plants and access to an outdoor spigot or rain collection barrel for conveying water to the plants.

D. **Entry from the Salon** is achieved through a new punched opening on the east side of the Salon 3.2 m wide. A gate to enclose the opening will be provided that replicates the gating systyem on the east side of the Salon,

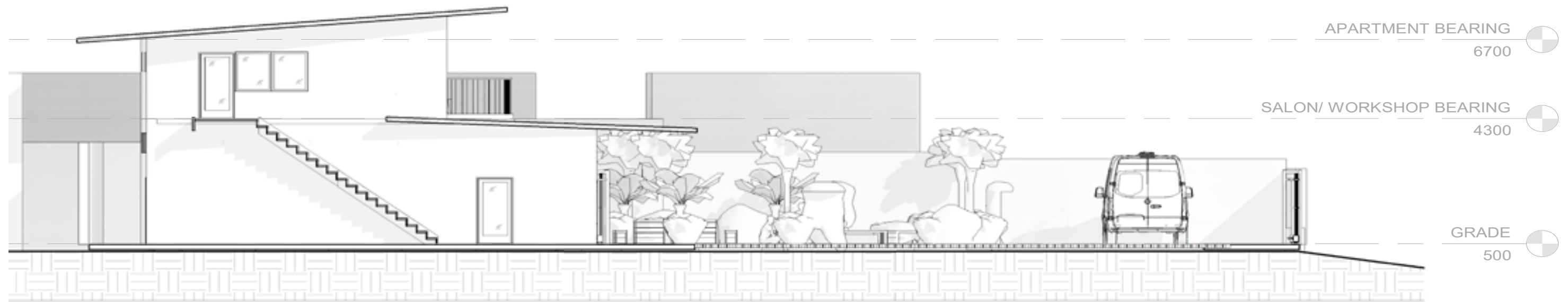
E. The balance of the site around the Warehouse will be paved in solid concrete for easy access transporting tools and materials. this includes walkway of the the 3 meter setback around the Warehouse and the 2 meter offset from the existing Salon Building.

The Warehouse will have an entry that opens directly onto the entrance drive and will have paving connecting this entrance to the new Salon Entry. A steel canopy system, xx by xx separate from the Warehouse Building System, will be provided for protection over both entrances and the gathering space picnic benches. The canopy should have its own drainage collection and conveyance system to move water away from the entrance areas and drop off areas. The Workshop will be self supporting, with no shared walls, structure or roofing from the existing Salon building . 3 Meters are held clear on the West Side of the building to allow access for building maintenance. Access to the north side back of building will be provided for overflow or outdoor appropriate storage and access to a hand sink.

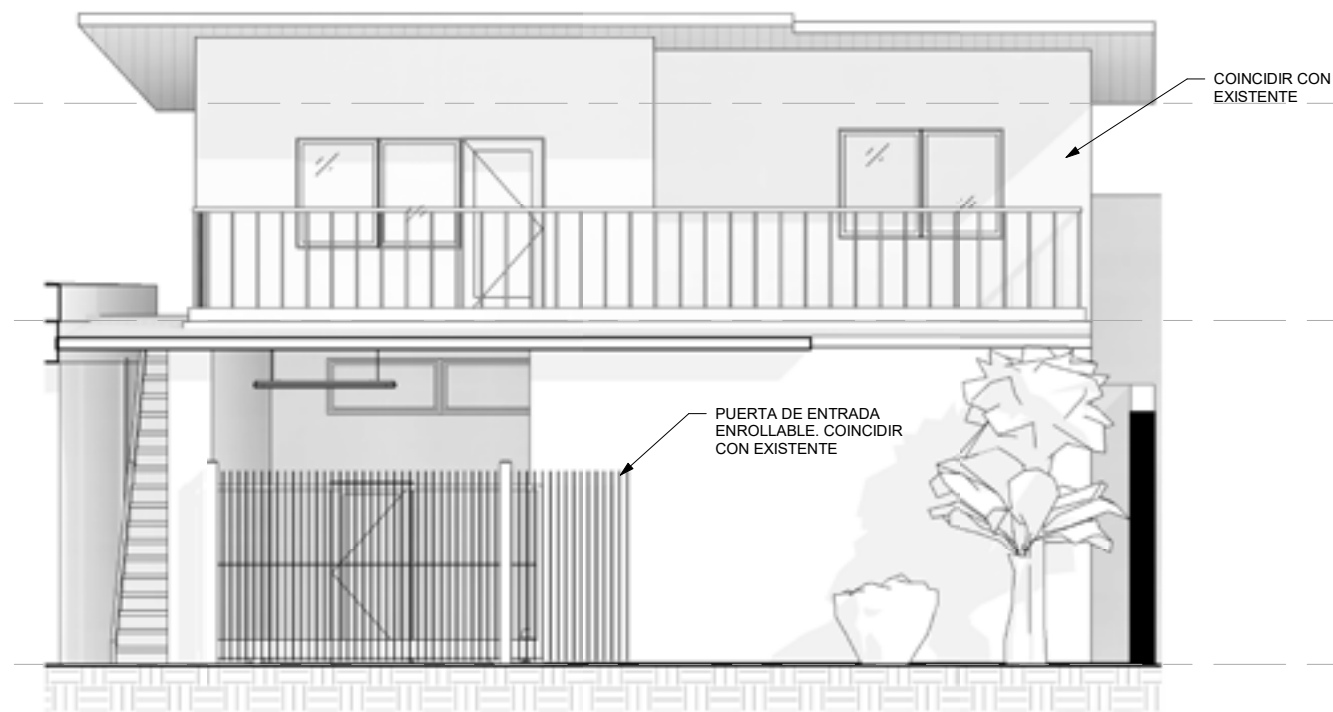
F. The upstairs **Living Space** s will provide 55.6 meters squared of living space holding a single private sleeping area and bath, living/work area, kitchenette, and outdoor eating and entertaining areas. Access to the Living space is provided via covered stair plan west of the workshop.



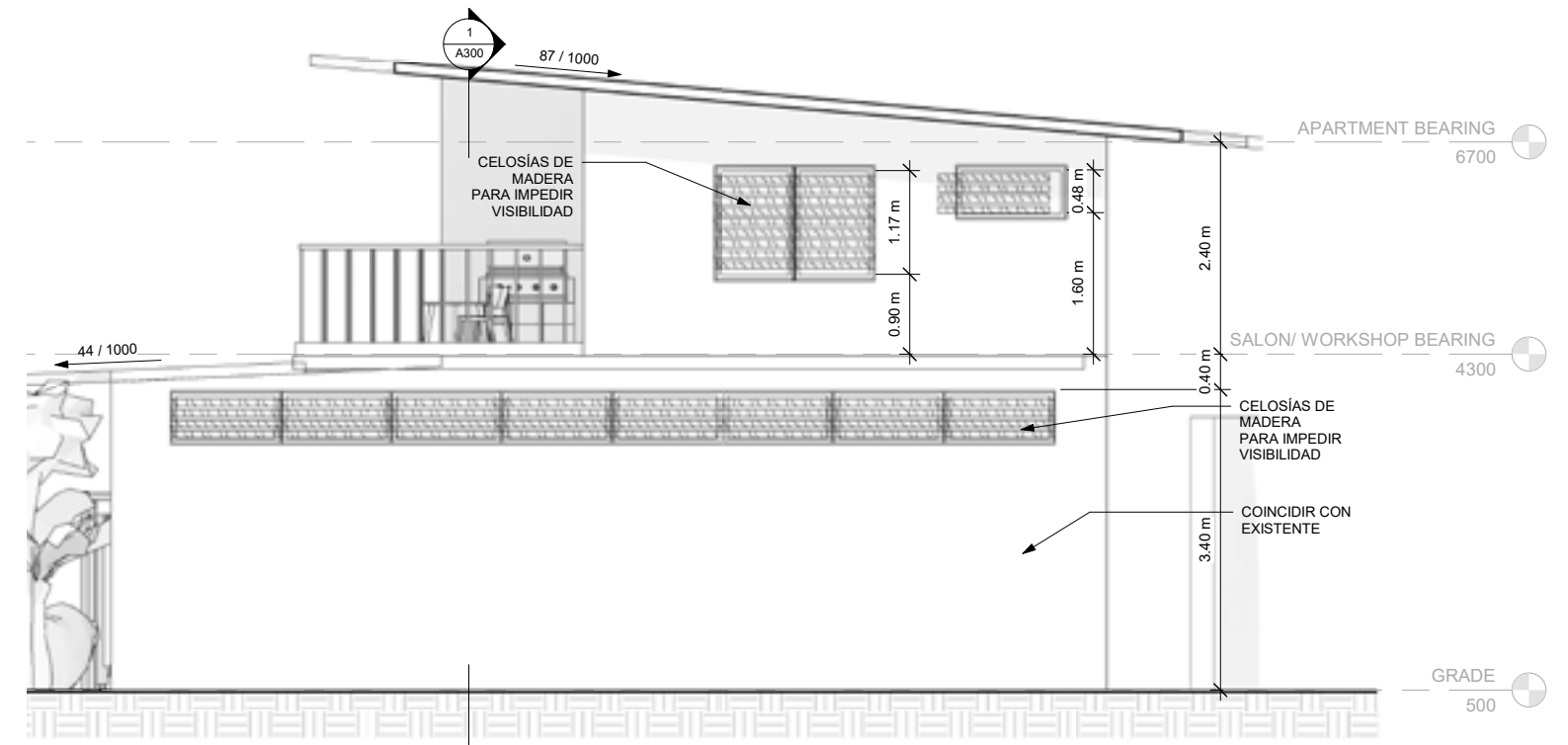
Site Sections



Workshop and Loft Elevations

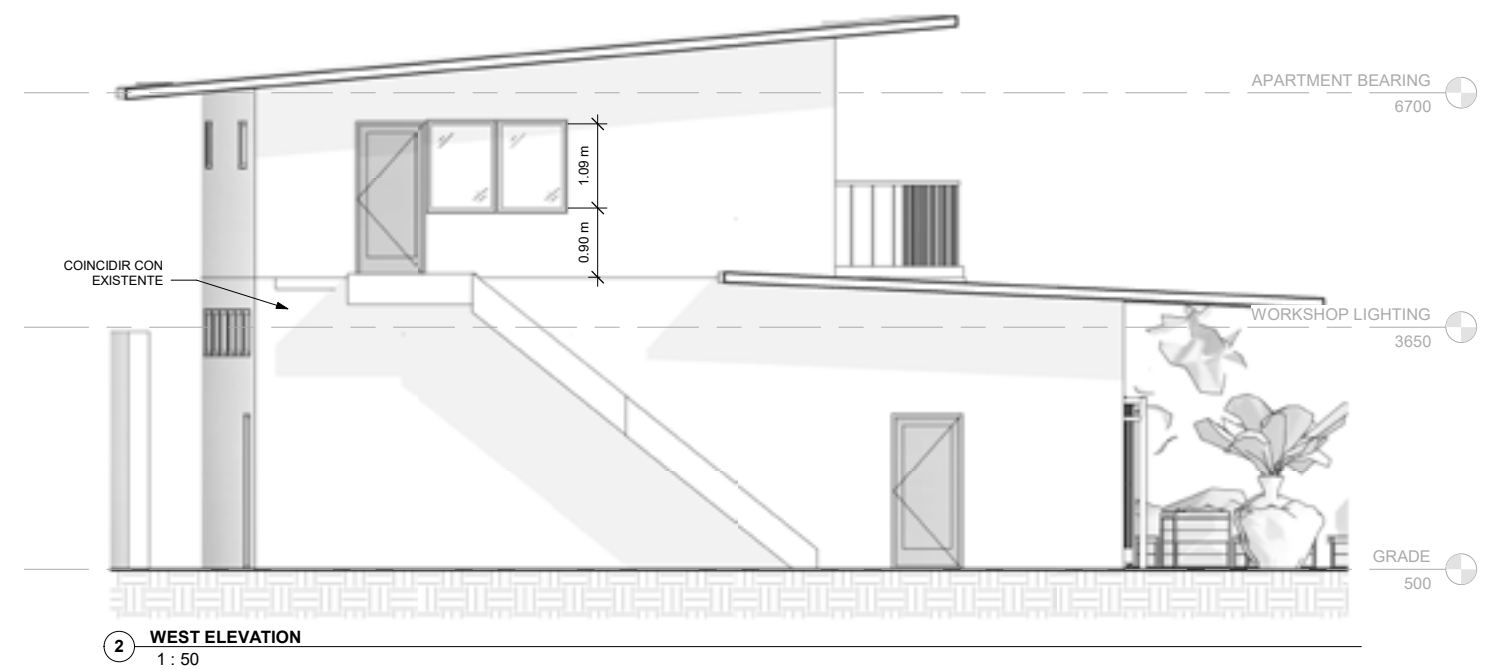
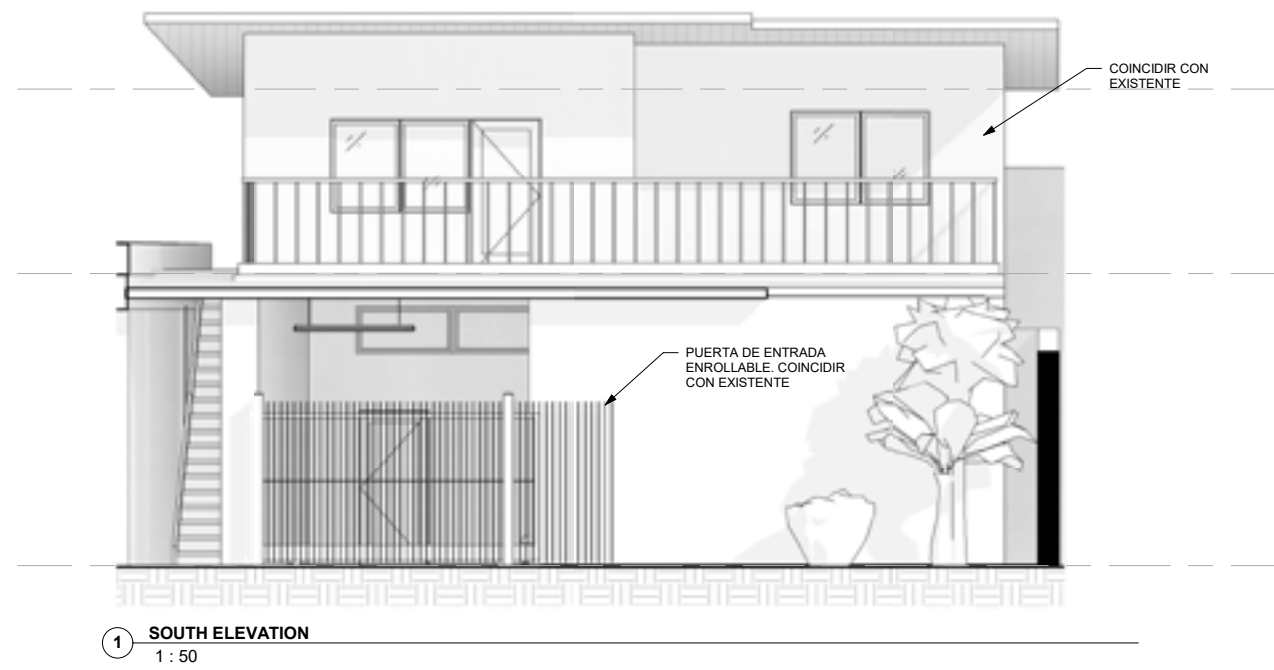


1 SOUTH ELEVATION
1 : 50

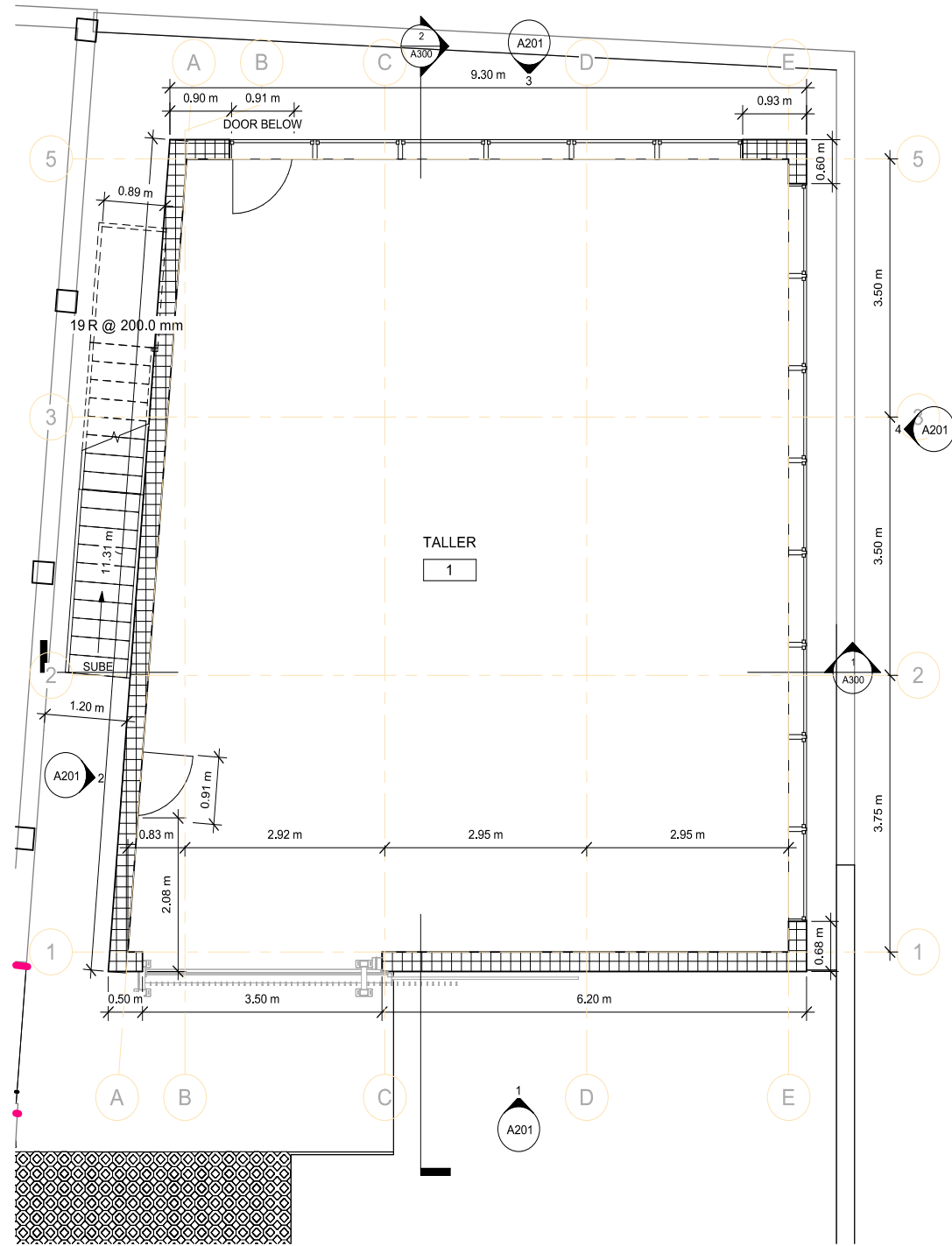


4 EAST ELEVATION
1 : 48

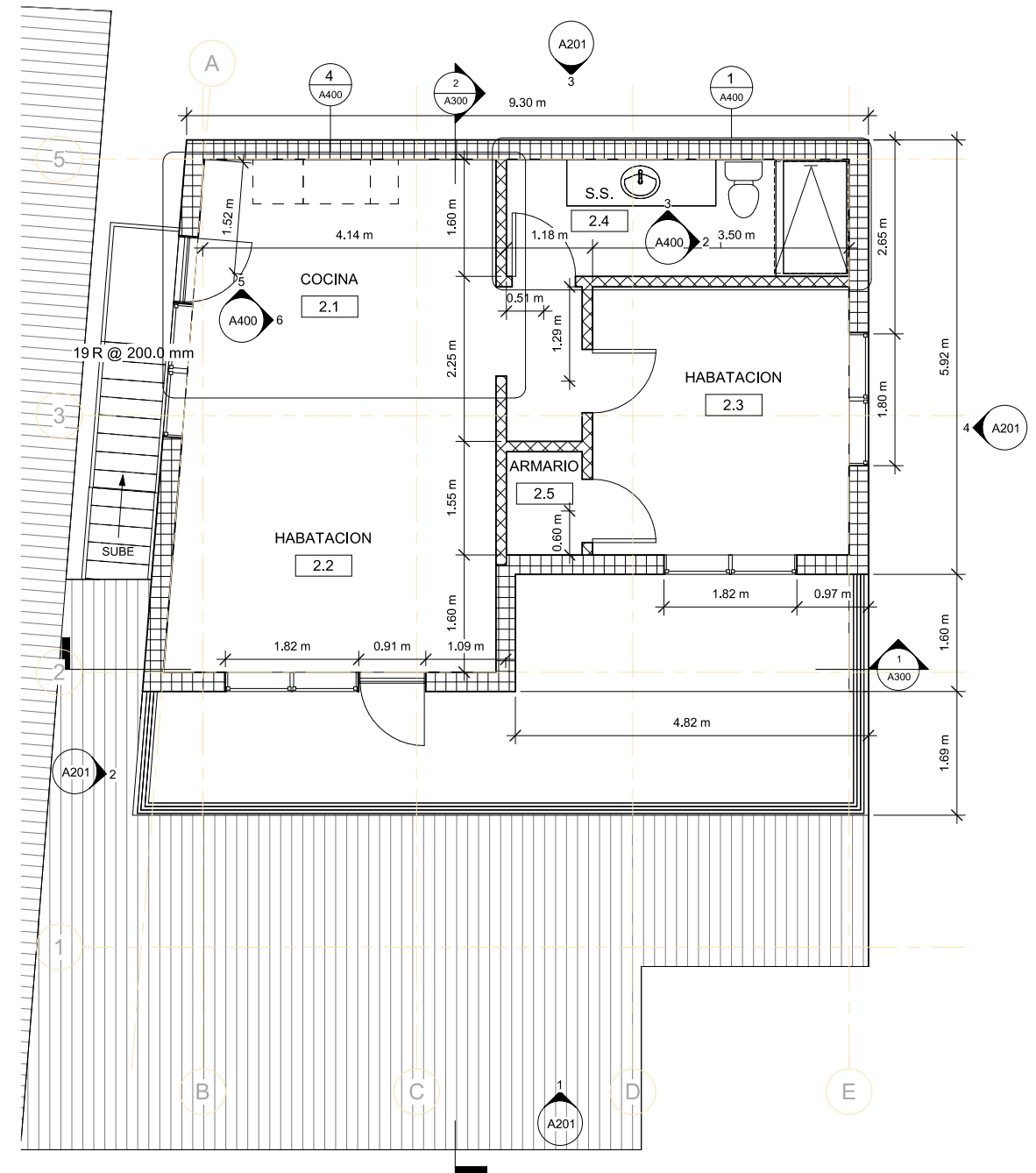
Workshop and Loft Elevations



Workshop and Loft Floor Plans

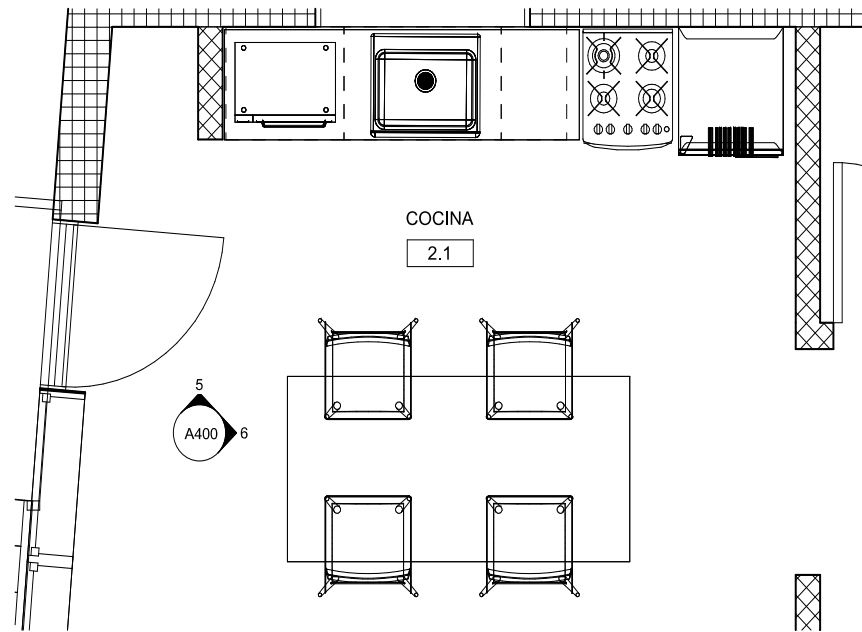


1 LEVEL 1 - NEW CONSTRUCTION - WORKSHOP
1 : 48

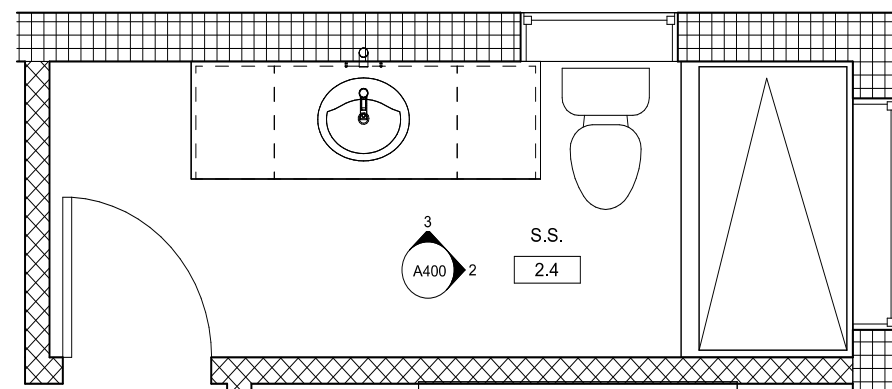


3 LEVEL 2 - NEW CONSTRUCTION - LOFT
1 : 48

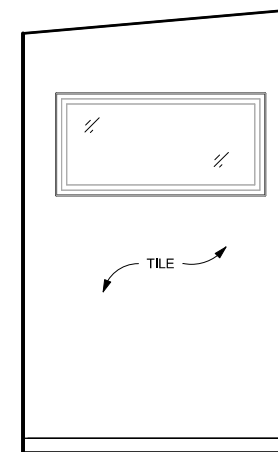
Enlarged Floor Plans



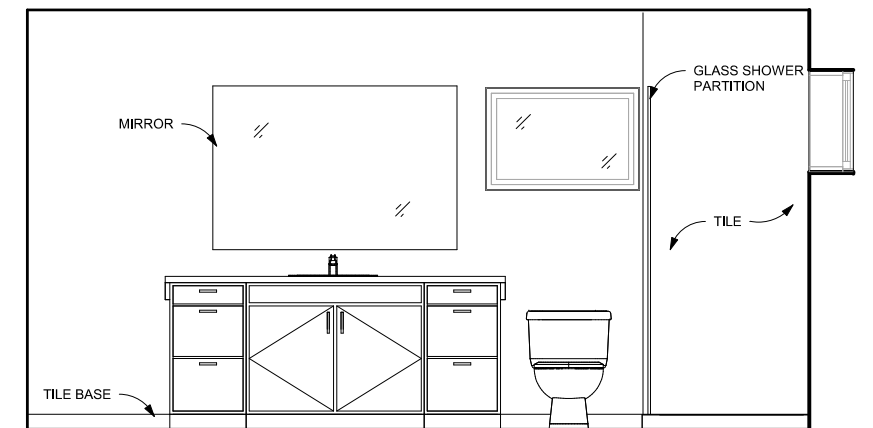
4 ENLARGED KITCHENETTE PLAN
1 : 24



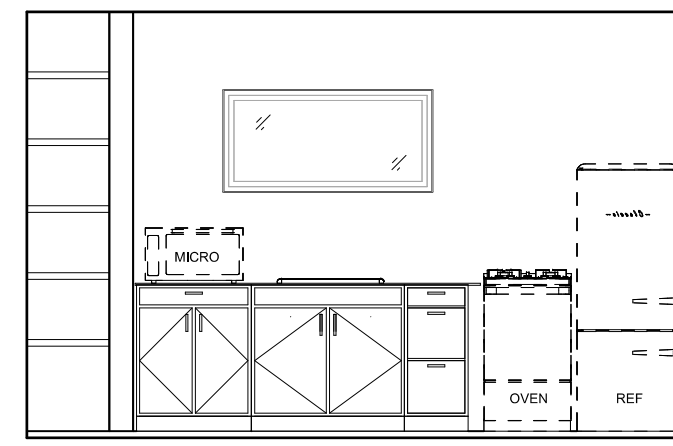
1 ENLARGED BATHROOM PLAN
1 : 24



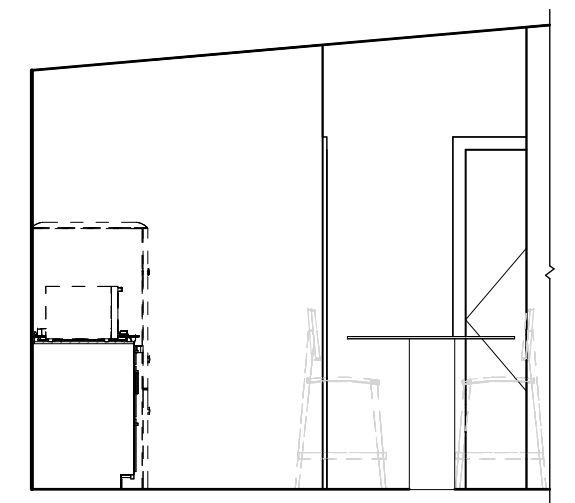
2 SHOWER WALL ELEVATION
1 : 24



3 BATHROOM VANITY ELEVATION
1 : 24



5 KITCHENETTE ELEVATION
1 : 24



6 KITCHENETTE AND ISLAND ELEVATION
1 : 24

